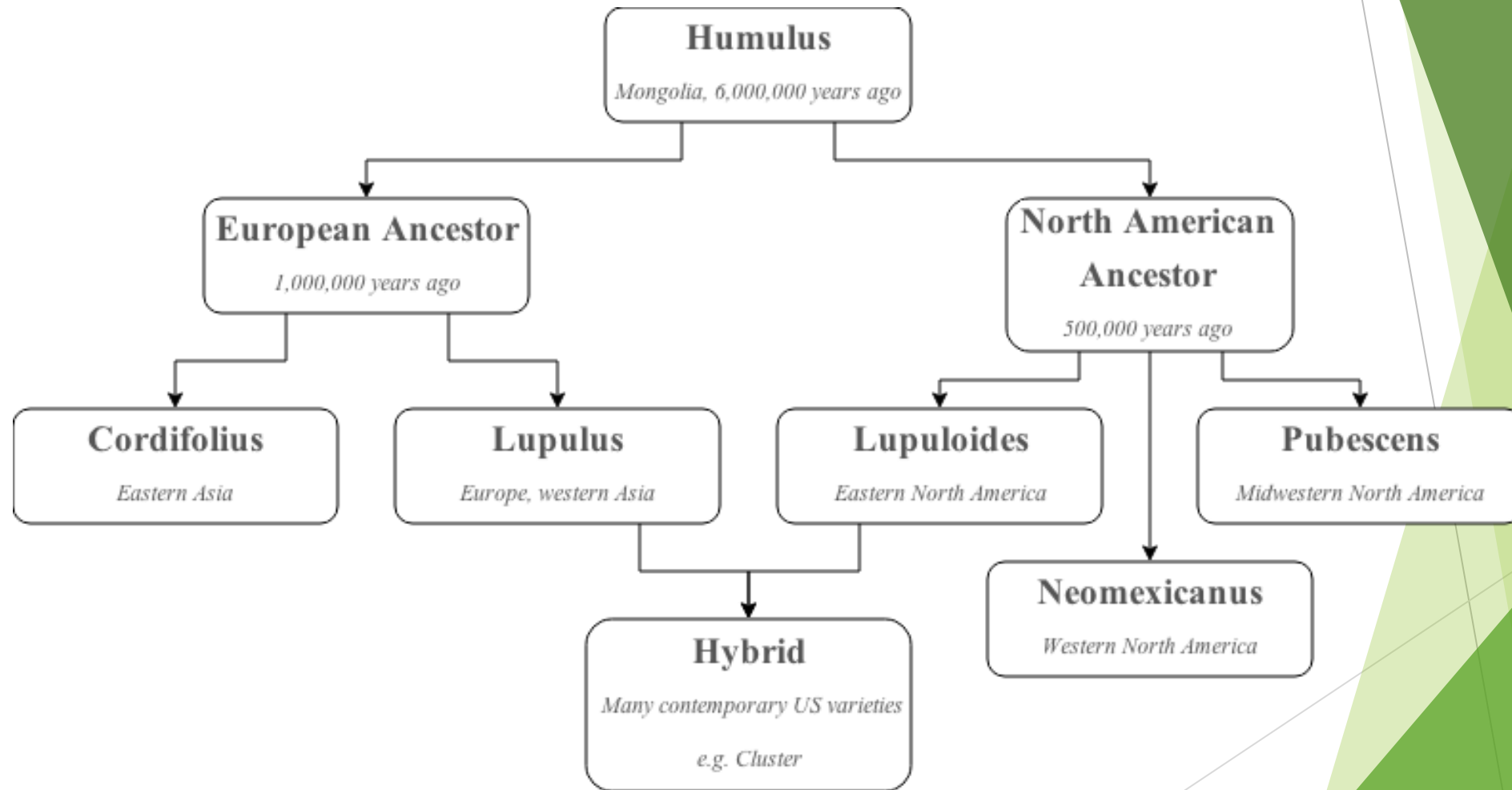
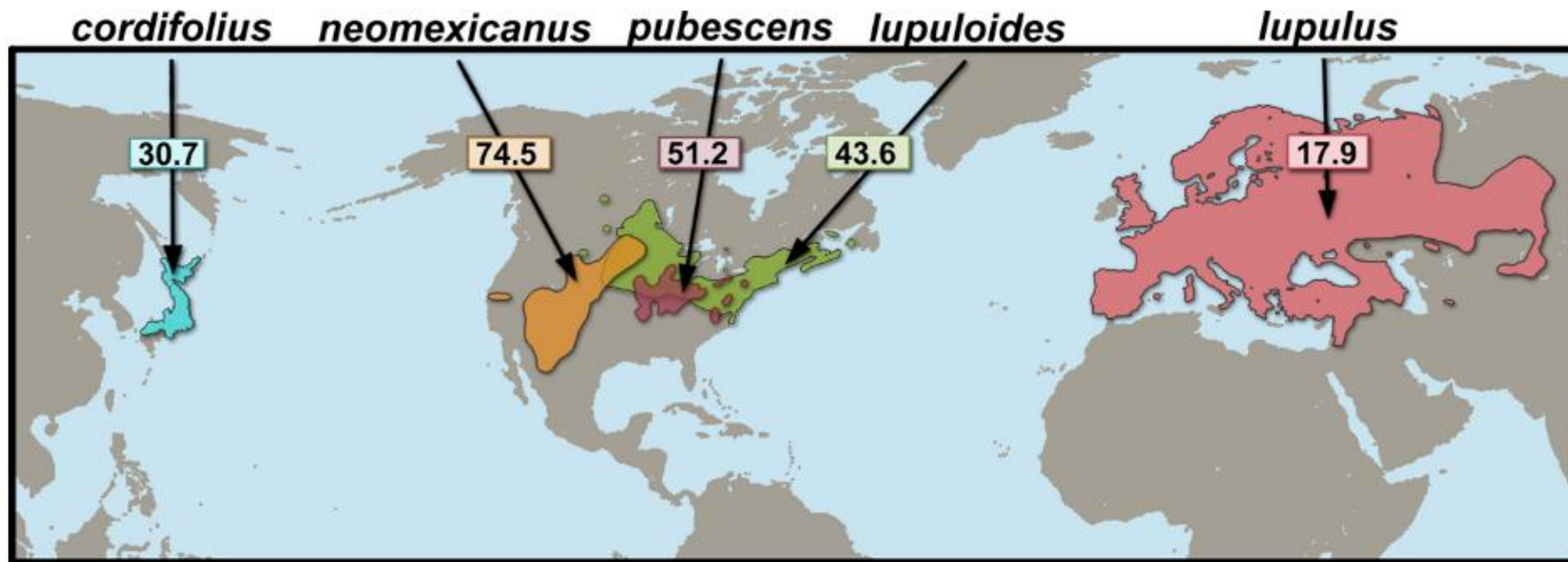


# Hop Taxonomy



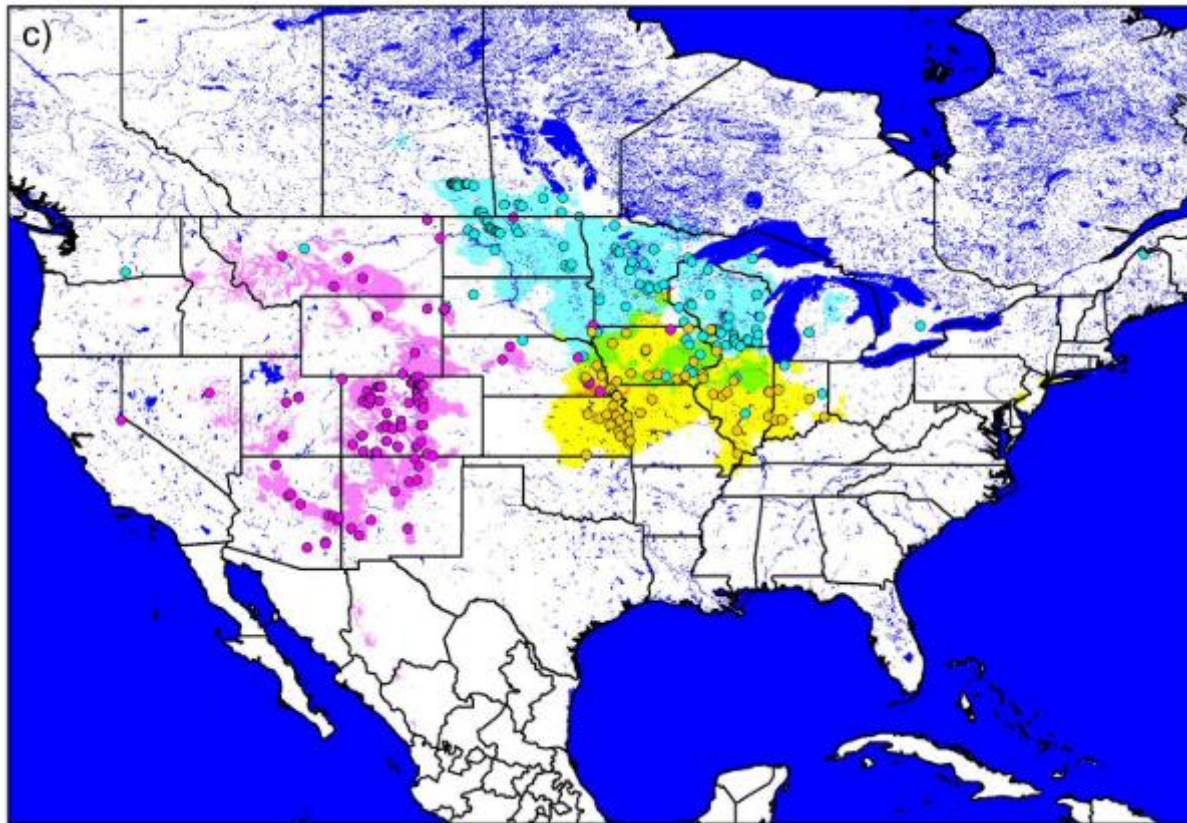
# Worldwide Range and Distribution



**Fig. 6** Comparative mean density of protective foliage glands in the five recognized taxonomic varieties of *Humulus lupulus* (data from Small 1978; see Table 2). Geographical ranges are

for wild (native) populations, not introduced or cultivated plants. Notice the higher density of leaf glands in North America

# American Wild Hop Genetic Distribution



2011

REEVES AND RICHARDS—SPECIES DELIMITATION IN WILD HOPS

53

